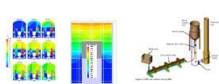


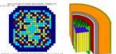
Design basis accidents



Severe accidents

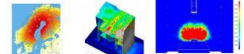


Nuclear fuel

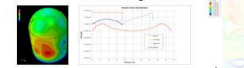


Water chemistry

External threats & airplane crash



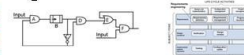
Structural analysis



Primary system and components mechanical design



Digital I&C



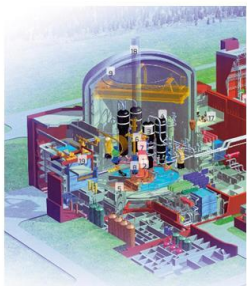
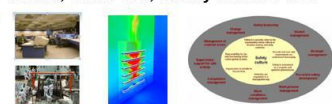
Radiological consequences



PRA



Other: main control room, supply chain, cable fire, safety culture etc.



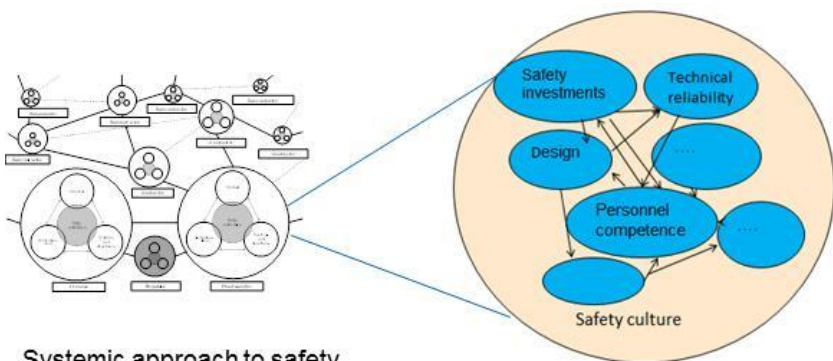
Deepwater Horizon oil spill, 2010



Fukushima Dai-ichi NPP 2011



Boeing 737, Max 8 Model 2019,(2018)



Systemic approach to safety



SÄTEILYTURVAKESKUS
STRÅLSÄKERHETSCENTRALEN
RADIATION AND NUCLEAR SAFETY AUTHORITY